



GIVING LIFE TO YOUR PROJECTS

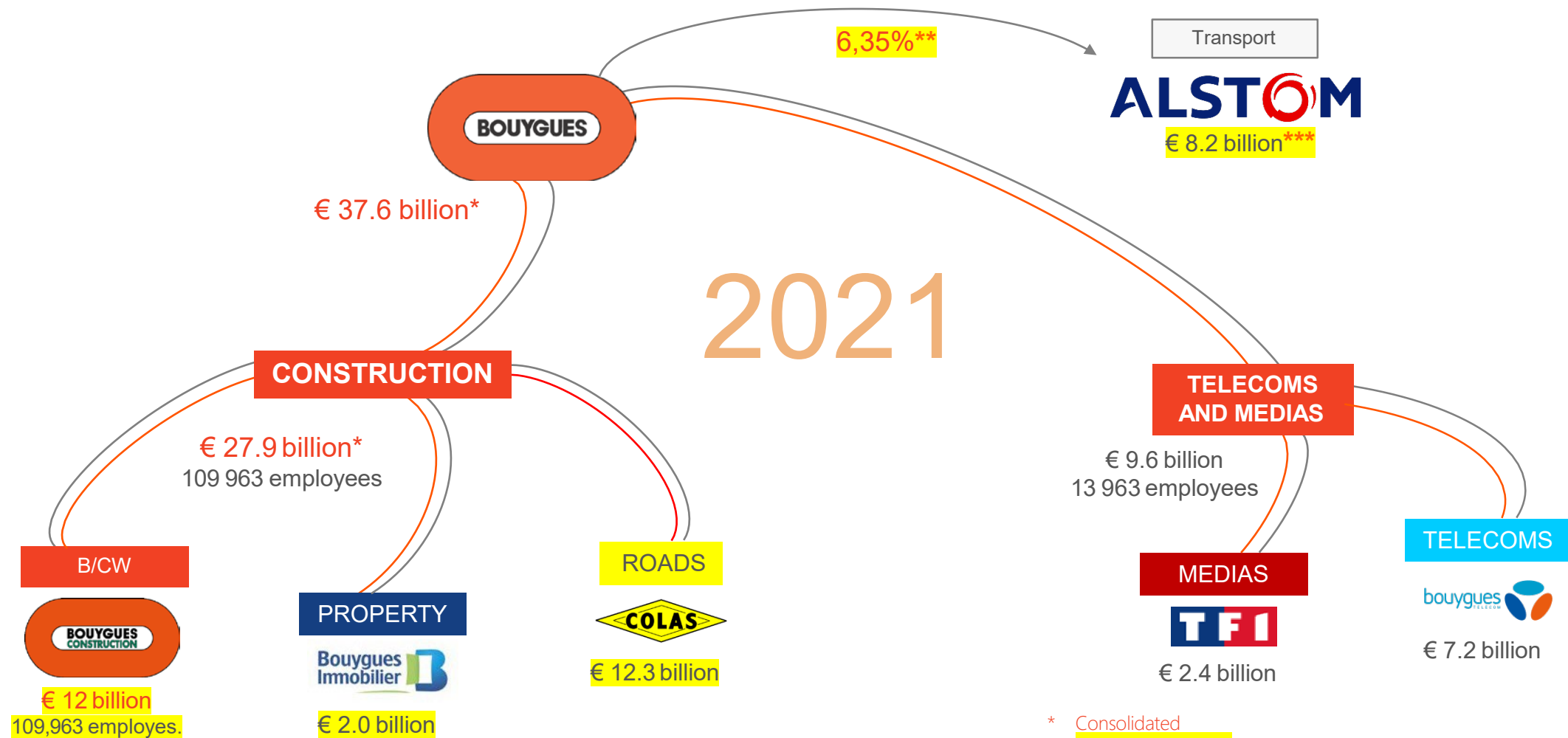
Shared **innovation**



1 - BOUYGUES GROUP PRESENTATION

BOUYGUES GROUP

124 600 employees Worldwide



* Consolidated
** In April 2021, 3.12%
*** Fiscal year 20120/2021

BOUYGUES GROUP



Present on all five continents





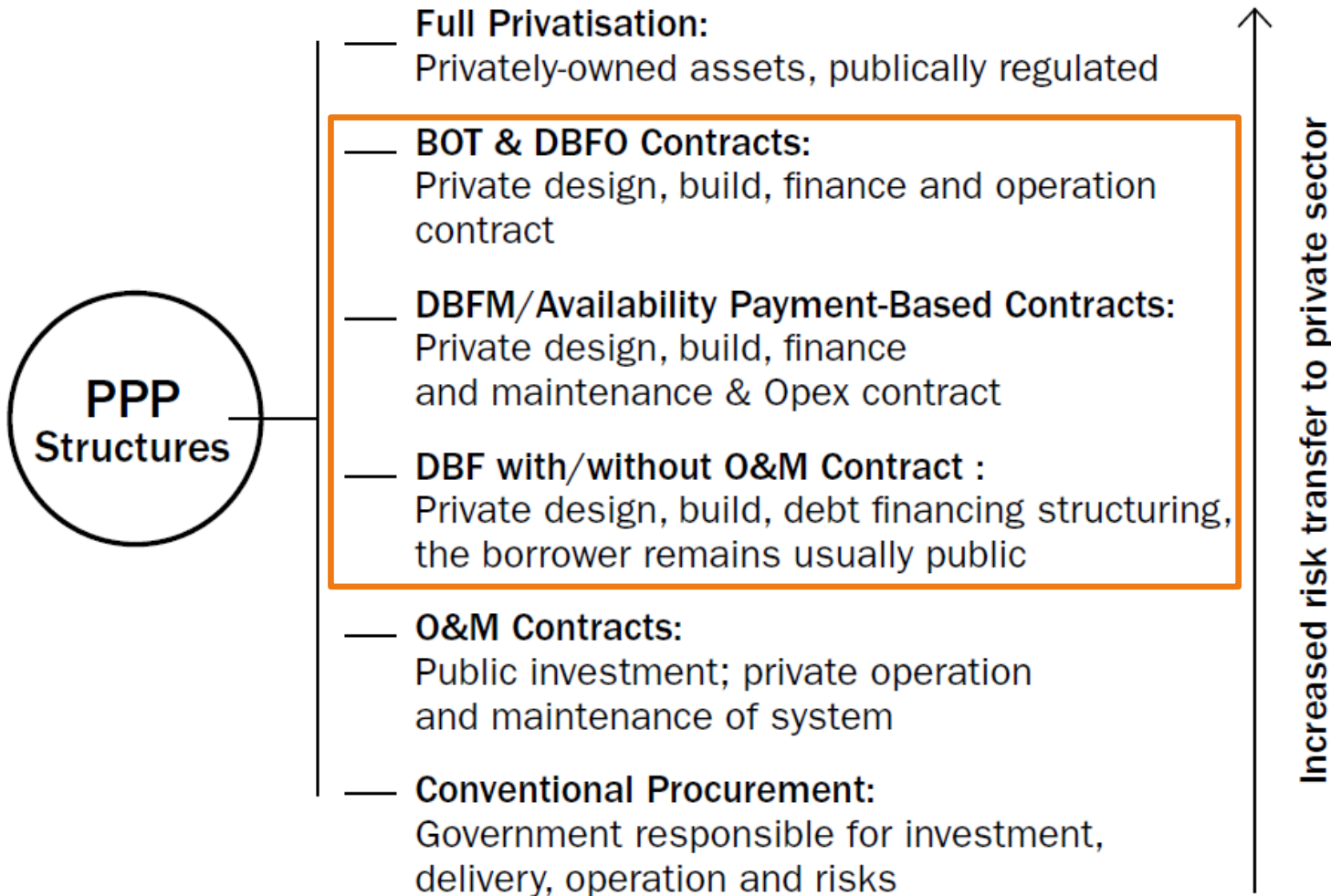
2 - AIRPORT DEVELOPMENT

Our Value Proposition

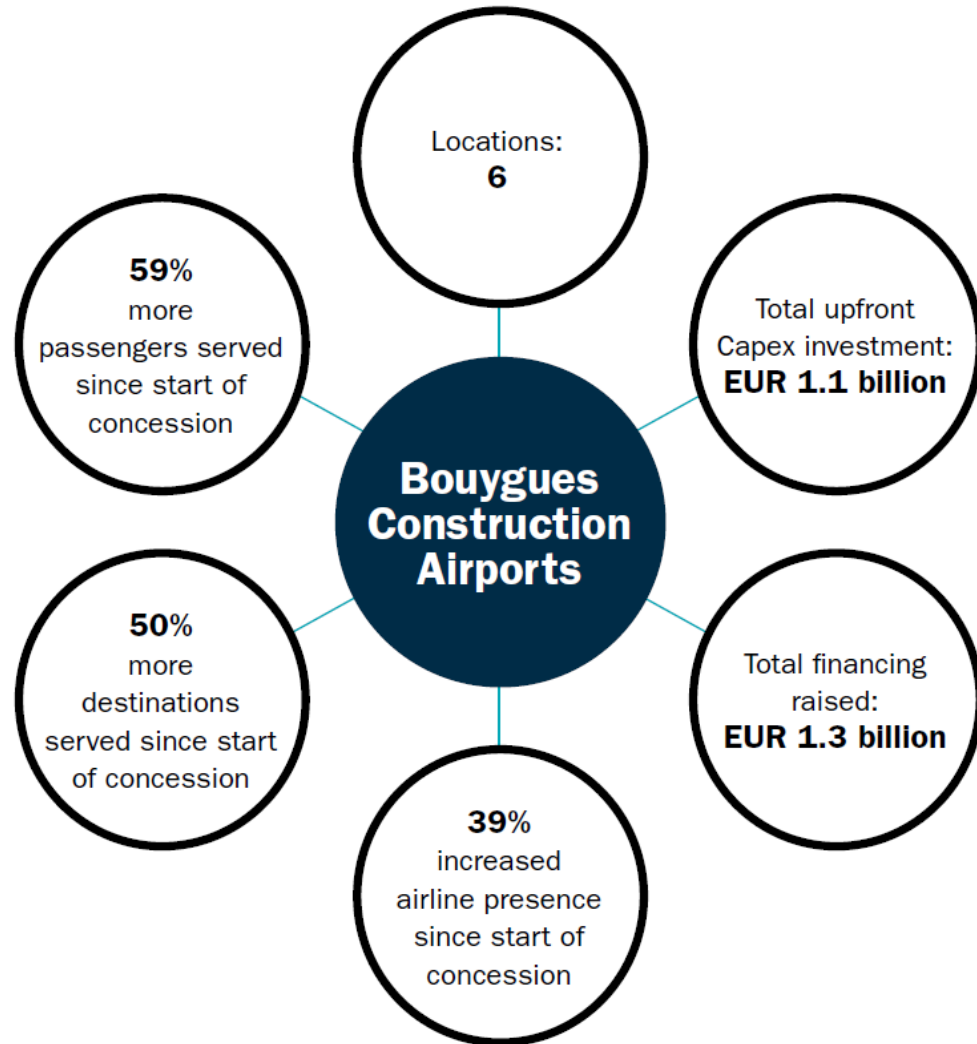


Provider	Financial Structuring	Airport Design	Delivery	Asset Development
Typical Airport Constructor		○	●	
Typical Operator				●
Bouygues Construction Airports & Bouygues Bâtiment International	●	●	●	●

PPP Structuring Spectrum



Our Airport Concession's key performance indicators



- ✓ 2019 passenger figures are used
- ✓ Life cycle and heavy maintenance investments have been excluded from Capex figures
- ✓ Passenger figures at Iqaluit are not included

A KEY PLAYER IN AIRPORT CONCESSION



Madagascar Airport Concession

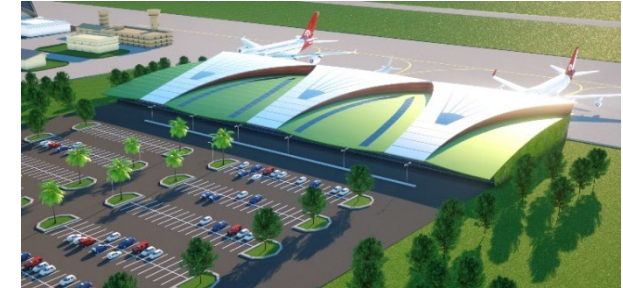
- ▶ 28 years PPP with traffic risk, covering :
 - Ivato, the Capital City Airport,
 - Nosy Be, first sightseeing airport in the country

- ▶ With obligations to Design, Build, Finance, Maintain & Operate (DBFMO) a new International Passenger Terminal at Ivato :
 - To bring capacity to 2,5 Mpax,
 - First contact positions in the country,
 - Full resurfacing of the two runways,
 - Upgrade of the infrastructure to Environmental Compliance,
 - Total Investment: 143 M€

- ▶ Operation of existing facilities, airside infrastructures and terminal

- ▶ Structured as lead sponsor a 212 M€ private financing facility

Senior Lenders : IFI Club Deal



Ownership

Contractors :	
Bouygues Bâtiment International	10%
Local Colas (Group Bouygues)	10%
Operators :	
ADP International	35%
Infrastructure Funds :	
Meridiam	45%

Awards



Deal of the Year 2017
Airport MEA



Project Finance International
Deal of the Year 2017
Transport MEA



Green Certification



A KEY PLAYER IN AIRPORT CONCESSION



Zagreb Airport Concession - Croatia

- ▶ 30 year PPP with obligation to Design, Build, Finance, Maintain & Operate (DBFMO) a new International Passenger Terminal :
 - Capacity 5 Mpax, extension to 8 Mpax,
 - New apron with 8 contact positions,
 - Total Investment: 324 M€ (Capex & Life Cycle)

- ▶ Operation of existing facilities: airside infrastructures and terminal.

- ▶ Awarded to Zagreb Airport International Corp. (ZAIC) in February 2012. Concession Handover in December 2013.

- ▶ Structured as lead sponsor a € 301 M private financing facility.

Senior Lenders :



Ownership

Contractors :	
Bouygues Bâtiment International	20.77%
Local Viadukt	5.11%
Operators :	
ADP International	20.77%
TAV	15.00%
Infrastructure Funds :	
Marguerite	20.77%
IFC	17.58%

Awards



Green Certification



A KEY PLAYER IN AIRPORT CONCESSION



Iqaluit Airport PPP - Canada

- ▶ Public-Private Partnership for the financing, design and construction of a new passenger terminal, along with operations and maintenance for a period of 34 years.
- ▶ The works consist in :
 - Designing and building a 10,000 m² terminal and a new combined service building of 4,500 m²,
 - Extending and refurbishing about 400,000 m² of runways and apron,
 - A \$ 230 M capex investment, on the Polar Circle
- ▶ The building will include combined heat and power production.
- ▶ Located in Canada's largest and the furthest to the North territory, the airport, strategic for both civil and military aviation, will serve a territory that is as vast as Western Europe, yet has no road network to link its 25 communities.
- ▶ Structured as lead sponsor a \$ 165 M private financing facility.

Private Bond Placement



Ownership

Contractors :		
Bouygues Bâtiment International		10%
Sintra (Group Bouygues)		5%
Operators :		
Local Winnipeg Airport		5%
Infrastructure Fund :		
Infrared		80%



A KEY PLAYER IN AIRPORT CONCESSION



Cyprus Airport Concession

- ▶ Bouygues, leading shareholder of Hermes Airports awarded in 2006 a 25 year concession on the airport of Cyprus
- ▶ 2 new terminals to Finance, Optimize the Design, Build & Operate :
 - Larnaka : 10,5 Mpax, 93 000 sqm, delivered Nov. 2009
 - Paphos : 3,0 Mpax, 18 000 sqm, delivered Nov. 2008
- ▶ Shareholding : 1/3 of Local Partners
- ▶ Works with Local Contractors - transfer of know-how
- ▶ Structured as lead sponsor a € 612 M Financing facility

Mandated Lead Arrangers
(Senior + Mezzanine)



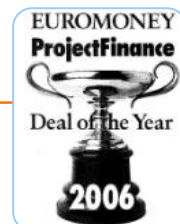
Ownership

Contractors 1/3		
Bouygues Bâtiment International		22%
Local Iacovou Brothers		5.7%
Local Chapo		5.7%
Operators 1/3		
Vancouver Airport		11%
Egis Projects		20%
Aéroport de Nice		2%
Retailer & Supplier 1/3		
Aer Rianta (Dublin Airport)		11%
Local Cyprus Trading Corp.		11.3%
Local Hellenic Mining		11.3%

Cliquez pour ajouter du texte

Awards

London City Awards:
Financial Closing
Over the past 5 years, Bouygues has achieved financial closing for a total over € 7,500 M





5 - AIRPORT CITY LAND SIDE DEVELOPMENT

A LEADING EXPERIENCE IN AIRPORT CITY

Hong Kong Airport City Case Study



Hong Kong Airport Asia World-Expo
PPP 25 years 132 000 sqm



Hong Kong Airport
Sky City Marriott 658 keys



Hong Kong Airport
73 000 sqm offices Cathay Pacific HQ

AIRPORT CITY: HONG KONG CASE STUDY

Hong Kong Airport' s - Civil Aviation Department CAD Headquarters

- ▶ The new CAD headquarters will house the Air Traffic Control Centre, which includes:
 - Aeronautical Network Centre,
 - Aeronautical Information Centre,
 - Rescue Coordination Centre,
 - Aircraft Accident Investigation Department,
 - Examination and Training Facilities.
- ▶ A € 180 M project, including 63,000 sqm of office spaces spread on a 29,800 sqm site on Hong Kong International landside.
- ▶ A Platinum HK-BEAM environmental building including:
 - Photovoltaic panels,
 - Solar powered lights with optical fiber solar tracking systems,
 - Energy efficient building systems,
 - 3 axial 2.000 W wind turbines,
 - Green walls and roofs



The Bird's EyeView



Inside the main hall

Hong Kong Civil Aviation Department Headquarter (CADHQ) is the first Bouygues Construction worksite to be awarded the Platinum HK-BEAM label, the highest level of the HK building environmental certification.

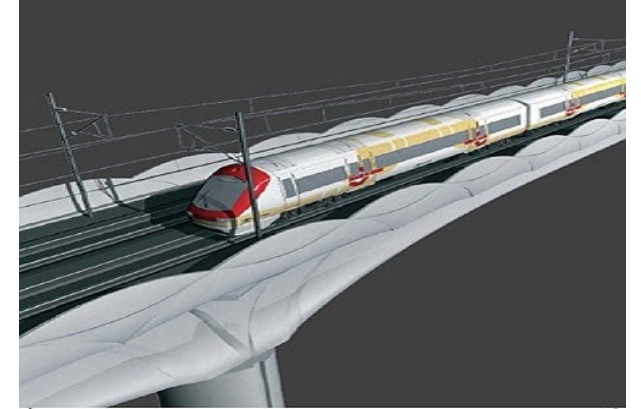
GROUND TRANSPORTATION INTERNATIONAL AIRPORT CITY DOWNTOWN



PPP - BOT Design, Construction, Finance & Operation

- ▶ Johannesburg International Airport, Johannesburg, Pretoria, Gautrain BOT Speed Rail, South Africa
 - Two lines totaling a length of 80 km, and includes 15 km of bored or blasted tunnels
 - 10.5 km of viaducts
 - 50 underpasses and overpasses
 - 10 stations, 3 of which are underground
 - Construction dates : 2006 - 2011 (54 months)

- ▶ Sydney International Airport, Sydney Downtown, BOT Subway Line Australia
 - Subway line between Kings for Smith Airport and city centre
 - 10,5 km line including 9 km long tunnel and four 170 m
 - Long stations
 - The longest tunnel ever driven on the continent
 - The biggest diameter TBM used, and the first slurry shield machine
 - 720 m of cut-and-cover tunnels and several engineered structures, including a viaduct and a tunnel beneath Cook river

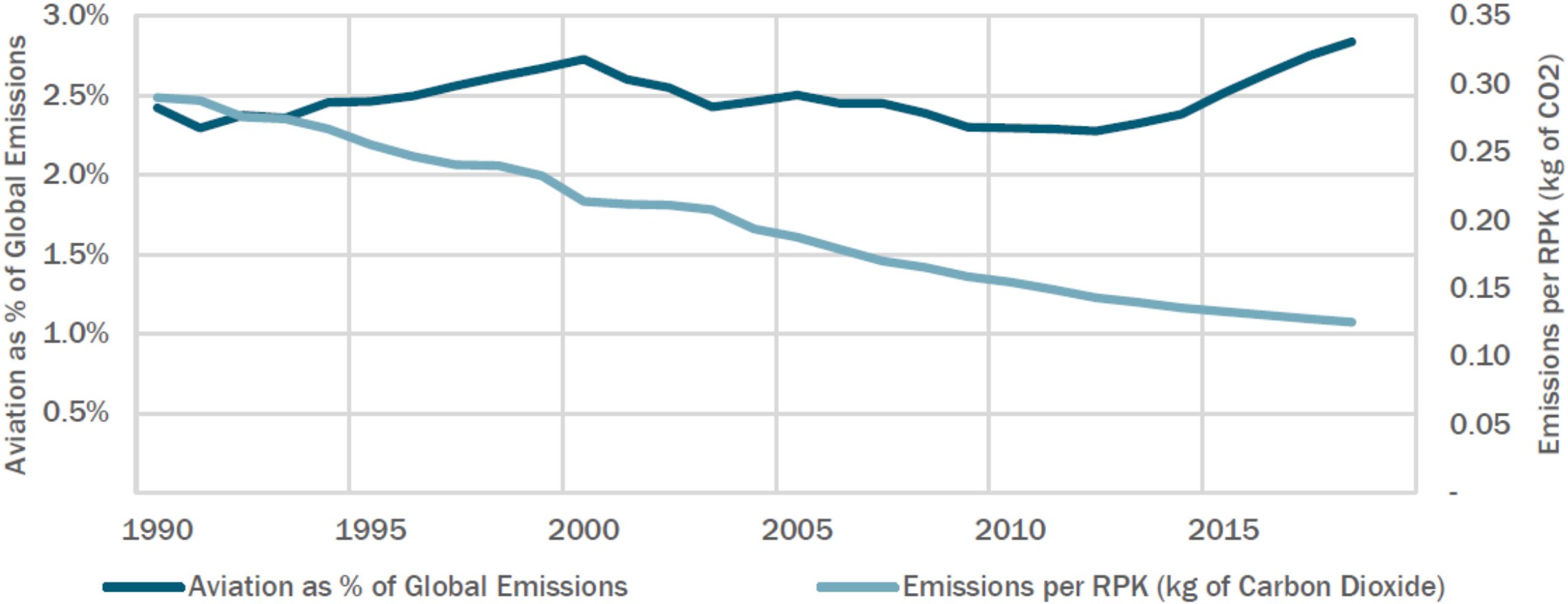


Gautrain Speed Rail BOT, South Africa
Link from Johannesburg International Airport -
Johannesburg and Pretoria via Midrand Grand
Central Airport



Sydney International Airport - Sydney Downtown
Australia
BOT Subway line

Food for Thought : Aviation & CO2 Emissions



Source : Our World In Data



Eric FLEURISSON

Managing Director
e.fleurisson@bouygues-construction.com
Phone: +33 6 69 58 48 44